



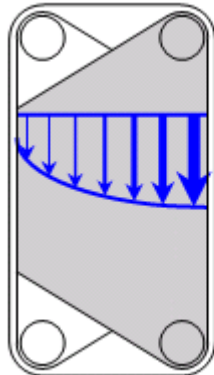
Features and Benefits of the Better Plate Heat Exchanger, the GEA Plate Heat Exchanger(GPHE)

Keep your process and maintenance departments happy with one brand of heat exchanger, the GEA NT EcoFlex plate and frame heat exchanger .

- **The Better GPHE - Even Flow Across the Entire Plate Surface**

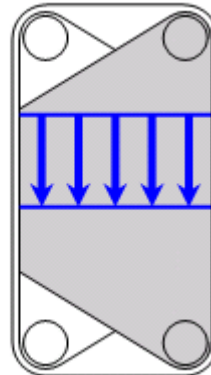
GEA makes sure you get the best efficiency out of your process by maximizing the contact surface. This is done using their Optiwave plate design.

Conventional Plate Design



**Low velocity on far side
reduces plate performance**

Optiwave[®] Plate Design



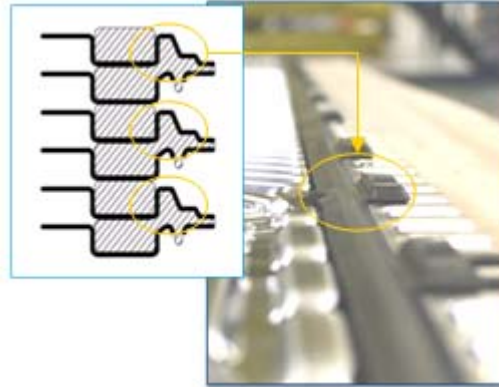
**Even velocity across the plate
maximizes plate efficiency**

- **The Better GPHE - Alignment Assurance**

To make maintenance easy when it is necessary, GEA has taken the main maintenance problems and eliminated them. To make sure the plates line up they have made them self-aligning.



**Plate lead ins in each corner.
Every plate self-aligns to the next.**

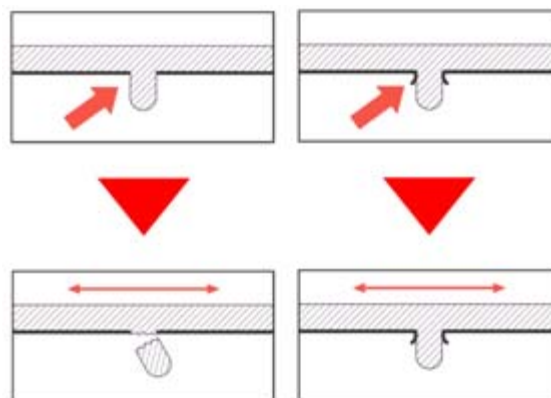


**Plate Alignment Guides every 4 inches
guide the next plate into alignment.**

- **The Better GPHE - Ecoloc™ Gasket Attachment**

The same gaskets that help align the plates are designed to be easily removed and reinstalled with out daming the plate or gasket.

Conventional Design
Punched hole creates sharp edge, cutting through gasket stud.



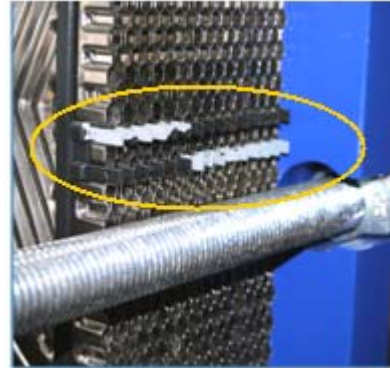
Ecoloc Design
Extruded hole creates protective tube, preventing stud damage.

- **The Better GPHE - External Gasket ID Tabs**

Once you have your plates gasketed, aligned and assembled in order you can check to see if they are correct before you even tighten down the plates with the GEA gasket ID Tabs.

External Tabs tell you the exact material, model and size.

- Identify this without the need to open the heat exchanger.
- Acts as a re-assembly aid to further ensure proper plate alignment.
- Color coding of materials makes material ID a snap!



- **The Better GPHE - Superior Tie Rod Assembly Quality and Roller Bearing Thrust Bearing**

Once you all set it is time to tighten down your frames. GEA has taken this into account as well with their tie rod system and their roller bearing bushings.

Installation location is sometimes in a challenging environment.

The last thing anyone wants is a heat exchanger whose tie rods have seized up from rust.

The entire tie rod assembly is zinc-coated as standard to minimize this issue.



All of these parts are zinc-coated.

- Thrust Bushings
- Lock Bushings
- Washers
- Nuts
- Threaded Rod

Superior quality from GEA!



Standard on connection sizes over 6", there are four per unit. The low turning resistance makes the job of removing and reinstalling the tie rods quicker and easier.

